

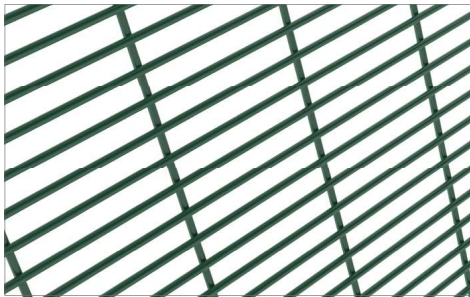


Securifor®

Panels

Securifor is a high security fencing system made of anti-climb welded panels supported by the choice of high security posts.

Product detail



BENEFITS

Vandal resistant

The finger-proof aperture combined with 4mm wire diameter provides a substantial barrier that is difficult to climb and break through, almost impossible to cut wires with the use of conventional bolt or wirecutters.

Secure and discreet

The ultimate system for providing a high degree of security where a discreet visual impact on the immediate environment is essential.

Efficient deterrence

An effective deterrent to intruders available in various heights up to 6m - specially designed for high security applications. Compatible with electronic alarm and detection systems.

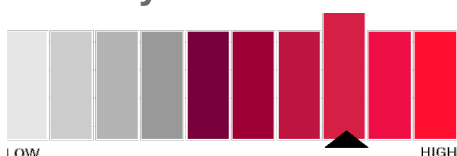
Durable

Low maintenance and long life resulting from high quality coating.

Complete system

Supplied as a complete system with panels, three possible post systems and gates. Installation on a slope is also available.

Security level



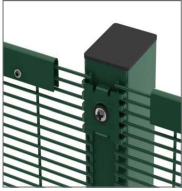
Applications



Functionalities

Post and fixing systems

Securifor can be installed with three different post types:



Rectangular post system

80 x 60 x 2,5 mm x 120 x 60 x 3,0 mm (depending on the post length). The posts have a single row of M8 threaded inserts. The panels are fixed using specific fixators or full length cover plates and one-way bolts.



Bekafix Super post system

Lateral fixing of the panels with special metal security clips with bolts. Welded tubular posts (100 x 54 mm) in H-shape with punched holes for positioning/fixing of the panels. Panels are fixed lateral on this post, with special spider fixators and one way bolts. Posts are provided with a plastic cap.



Bekasecure post system

Post profile is 140 x 135 x 4 mm. They have a double range of holes 10 x 20 mm and the panels are secured with a continuous cover plate and specific stainless steel security bolts. The open profile of the post (patented) allows for electrical or fibre optic cabling and is closed with specific metal cap.

The top of the panels must be reinforced with a U-profile, available in steel (to be fixed with bolts) or in aluminium (clippable - see pictures above).

Panels

The panels are made of heavy, high security welded mesh of 2518,6 mm width. Several panels can be installed one above the other. Panels in one piece up to 6 m high are also available.

For maximum security the mesh is: 12,7 x 76,2 mm (H x W), with a 4 mm wire diameter.

Weld strength: 50% of the minimum tensile strength of the wire.

In tests, performed by specialised police departments, the mesh had a delay factor 40x greater than other standard fence products - a vital requirement to capture potential escapees.

Fully tested to comply with the security standards in Europe.

Gates

The Securifor system is supplied with matching gates using the same high security mesh infill as the fence. Single or double swing or sliding gates.

Coating technique

Panels made out of galvanised wires. An adhesion coating is given for perfect bonding with the polyester coating (min. 100 micron). The panels are also available coated in Zincalu Super (95% zinc, 5% aluminium) or galvanised and polyester coated for long life protection.



Colours

Green RAL 6005. Other RAL colours & Zincalu Super finishing are available on request.

Extra Security



Securifor Double Skin - panels

- guarantee a higher security and a maximum delay factor.
- two Securifor panels welded towards each other in an angle of 90°

ASSORTIMENT SECURIFOR

Height fence mm	Dimensions of the panels L x H - mm
2000	2518,6 x 2010,6
2400	2518,6 x 2417,0
3000	2518,6 x 3001,2
3650	2518,6 x 3674,3
4000	2518,6 x 4004,5
6000	2518,6 x 6011,1

* cfr. installation guide: available on request

